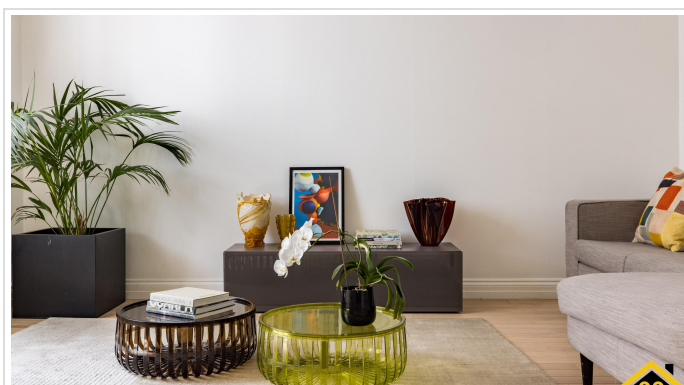
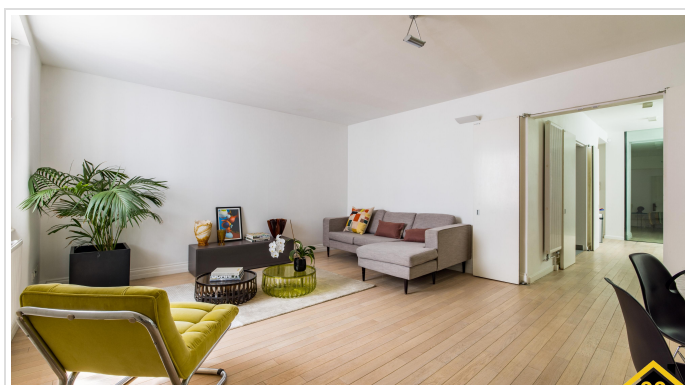


2 Bed Flat In Eccleston Square , London, SW1V 1PJ

£4,950 Monthly





SHORT DESCRIPTION

Property Ref: 9217 Exceptional Basement Residence on Eccleston Square This 125 sqm basement flat in a Grade II listed building combines period character with modern functionality. A full-height glass wall in the corridor allows abundant natural light to permeate the space. The property offers two double bedrooms, two bathrooms, and a spacious, well-equipped kitchen with ample storage. A private rear terrace provides additional outdoor space. Residents have exclusive access to the private, award-winning Eccleston Square gardens, which include designated quiet zones, an all-weather tennis court, and a children's playground. Ideally located, the flat is within a short walk of the shops and restaurants on Ebury Street, Elizabeth Street and South Belgravia, with Victoria, Pimlico, and Westminster stations close by. Property Type: Flat Full Renting price: £4950.00 Pricing Options: Fixed Price Tenure: 12 months Council tax band: H EPC rating: D Measurement:1420.836 sq.ft. Outside Space: Communal Garden, Patio Parking: On street Heating Type: Gas Central Heating -----

2

Bed Room(s)

2

Bath Room(s)

1

Living Room(s)

FLOOR PLAN

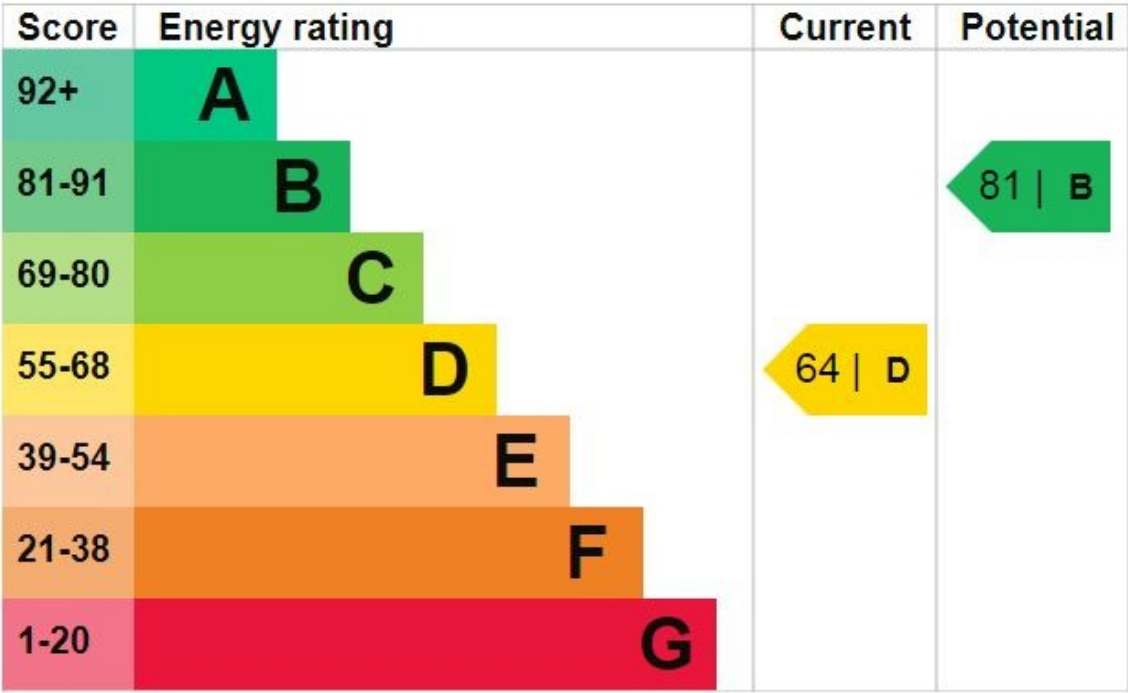
Illustrations are for identification purposes only and are not to scale.
All measurements are a maximum and include wardrobes and bay windows where applicable.



BASEMENT

EPC GRAPH

Illustrations are for identification purposes only and are not to scale.
All measurements are a maximum and include wardrobes and bay windows where applicable.



Disclaimer: The information displayed about this property comprises a property advertisement. 99home.co.uk (/) will not make no warranty for the accuracy or completeness of the advertisement or any linked or associated information, and 99home has no control over the content. This property advertisement does not constitute property particulars, the property may offer to tenants in same condition as they have seen on time of the viewing. The information is provided and maintained by 99home.co.uk (/)