

## 2 Bed Apartment In Horselydown Mansions Lafone Street, London, SE1 2NA

£2,850 Monthly





## SHORT DESCRIPTION

Property Ref: 9488 .. This two-bedroom furnished apartment is situated in a quiet and desirable street, conveniently located near Tower and London Bridge, as well as the River Thames. The apartment boasts ample natural light and spaciousness, distributed over two floors. It features a large private rooftop terrace, adorned with plants and herbs, which adds a touch of greenery to the urban setting. Upon entering the apartment, the elongated corridor leads to the two double bedrooms. The master bedroom is equipped with a double bed, ample storage, a built-in wardrobe, and an en-suite shower room. Bedroom two also includes a double bed, wardrobe, and storage facilities. The main bathroom is situated on the ground floor and comprises a shower over bath, storage, and a window that offers natural light and ventilation. The kitchen is fully equipped with all white goods, including a dishwasher. The spacious living area (20'2 x 15'4) is situated on the second floor and is generously lit by windows and terrace doors. This makes it an ideal space for those who work from home. The living area is furnished with a sofa, dining room table and chairs. The glass concertina doors lead onto the private rooftop terrace (27'7 x 8'5), which offers an ideal setting for relaxation and entertainment. The apartment's proximity to the River Thames provides easy access to a plethora of bars, restaurants, and green spaces, including Potters Field and the Bridge Theatre. Transportation links are conveniently located within walking distance, including London Bridge, Bermondsey, Southwark, and numerous bus routes. Available 8th of August 2025 Please view virtual tour Rent direct from Private Landlord Private property manager No agent inquires. Property Type: Apartment Full Renting price: £2850.00 Pricing Options: Guide Price Tenure: 12 months Council tax band: G EPC rating:C Measurement: 775.002 sq.ft. Outside Space: Terrace Parking: Permit Heating Type: Gas Central Heating -----

2

Bed Room(s)

2

Bath Room(s)

1

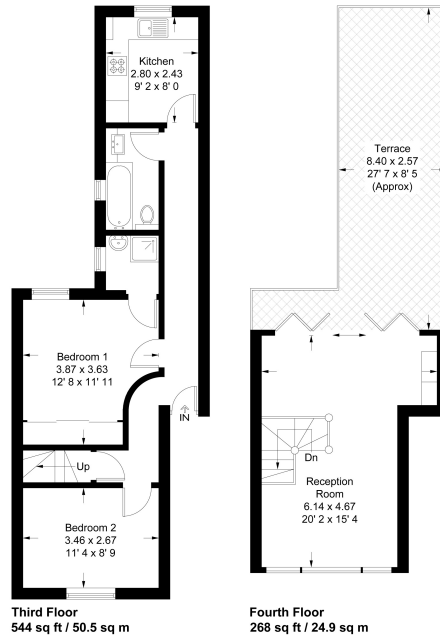
Living Room(s)

## FLOOR PLAN

Illustrations are for identification purposes only and are not to scale.  
All measurements are a maximum and include wardrobes and bay windows where applicable.

## Horselydown Mansions

Approximate Gross Internal Area = 812 sq ft / 75.4 sq m



Not to scale, for guidance only and must not be relied upon as a statement of fact  
All measurements and areas are approximate only and have been prepared in  
accordance with the current edition of the RICS Code of Measuring Practice

## EPC GRAPH

Illustrations are for identification purposes only and are not to scale.  
All measurements are a maximum and include wardrobes and bay windows where applicable.

Property type	Top-floor flat
Total floor area	72 square metres

### Rules on letting this property

Properties can be let if they have an energy rating from A to E.

You can read [guidance for landlords on the regulations and exemptions](#).

### Energy rating and score

This property's energy rating is C. It has the potential to be C.

[See how to improve this property's energy efficiency.](#)

Score	Energy rating	Current	Potential
92+	A		
81-91	B		
69-80	C	75 C	76 C
55-68	D		
39-54	E		
21-38	F		
1-20	G		

The graph shows this property's current and potential energy rating.

Properties get a rating from A (best) to G (worst) and a score. The better the rating and score, the lower your energy bills are likely to be.

For properties in England and Wales:

- the average energy rating is D

**Disclaimer:** The information displayed about this property comprises a property advertisement. 99home.co.uk (/) will not make no warranty for the accuracy or completeness of the advertisement or any linked or associated information, and 99home has no control over the content. This property advertisement does not constitute property particulars, the property may offer to tenants in same condition as they have seen on time of the viewing. The information is provided and maintained by 99home.co.uk (/)

